

AD Dogbone® M730

Overview

Frequency Band

UHF 860 - 960 MHz

Chip

Impinj M730

Antenna Dimensions

94 x 24 mm / 3.70 x 0.90 in

International Standard

ISO 18000-63 EPC class 1 Gen 2

Industry Segments

Automotive
Logistics
Sports and Events

Applications

Inventory and Logistics
Sports Timing
Supply Chain Management

RoHS

EU Directive 2011/65/EC and
Directive (EU) 2015/863

REACH

Regulation (EC) No. 1907/2006



Excellent global performance on difficult-to-tag materials

AD Dogbone® M700 inlays from Avery Dennison are designed for global supply chain, logistics, and sports timing applications. They excel through superior performance in demanding environments and on difficult-to-tag materials, due to their good tolerance against the detuning effect of high dielectric materials.

This product is equipped with the M730 IC from Impinj. The IC comes with 128-bit EPC memory and offers an enhanced “autotune” adaptive RF tuning feature. In addition, the IC has an improved read and write sensitivity, enabling faster and more accurate bulk reading compared to Impinj R6/R6-P.

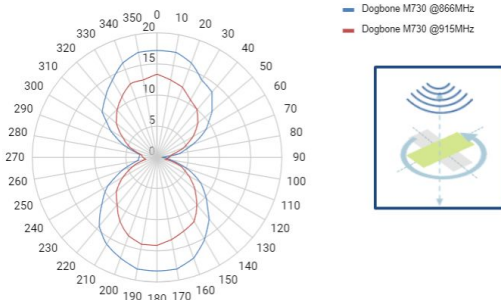
The M730 IC is compatible with the global GS1 UHF Gen2v2 standard and has a privacy mode that enables loss prevention and protects consumer privacy. AD Dogbone® M730 inlays have a size of 97 x 27 mm, which is optimized for 100 mm / 4 inch wide converted labels, and are available in dry, wet, and paper tag delivery formats.

Like all RFID products from Avery Dennison, AD Dogbone® M730 inlays are manufactured according to the industry's highest quality standards, as confirmed by the RFID Lab at Auburn University: The inspection body awarded Avery Dennison its first comprehensive and significant ARC accreditation for quality.

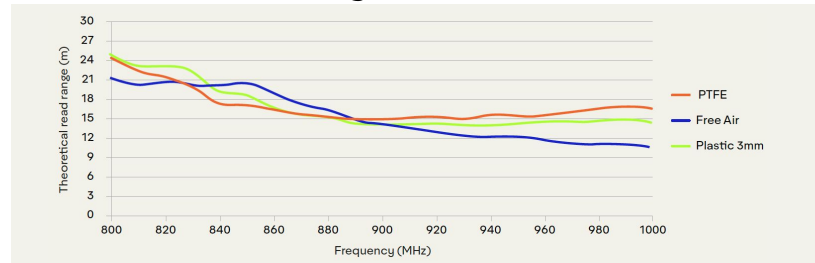
Technical features

| | | | |
|-----------------------|---|------------------------------------|------------------------------------|
| Chip | Impinj M730 | | |
| EPC and User Memory | 128-bit | | |
| TID Memory | 96 bits of Serialized TID with 48-bit serial number | | |
| Product Code | 3008223 / IL-604163 | 3008445 / IL-604318 | 3008054 / IL-604042 |
| Delivery Format | Dry inlay | Wet Inlay | Label |
| Die-Cut Dimension | - | 97 x 27 mm / 3.82 x 1.06 in | 97 x 27 mm / 3.82 x 1.06 in |
| Inlay Substrate | PET | PET | PET |
| Face Sheet | - | - | Mid-gloss paper |
| Inlay Liner Material | - | Silicon liner | Silicon liner |
| Standard Pitch | 30 mm / 1.18 in | 30 mm / 1.18 in | 30 mm / 1.18 in |
| Web Width | 97 mm / 3.8 in 100 mm / 3.94 in | 97 mm / 3.8 in 100 mm / 3.94 in | 97 mm / 3.8 in 100 mm / 3.94 in |
| Core Size | 76 mm / 3 in | 76 mm / 3 in | 76 mm / 3 in |
| Quantity / Reel | 10,000 pcs/reel | 10,000 pcs/reel | 3,000 pcs/reel |
| Operating Temperature | 45 °C to 85 °C / -49 °F to 185 °F | | |

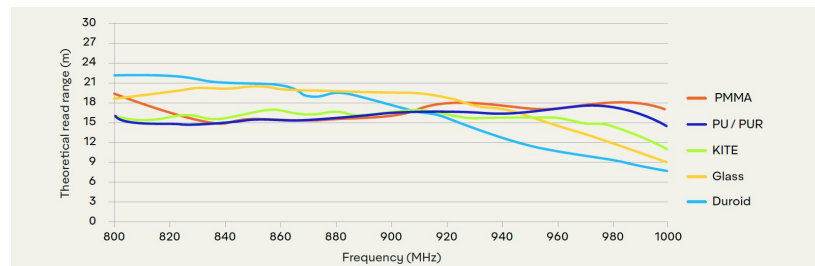
Orientation sensitivity



Theoretical read range in Class 1 materials



Theoretical read range in Class 2 materials



All graphs are indicative: performance in real life applications may vary.

Contact information

rfid.averydennison.com/contact

+1-678-617-2359

Connect with us on:



© 2022 Avery Dennison Corp. All rights reserved. 170 Monarch Lane, Miamisburg, OH 45342, USA Third party trademarks and/or trade names used herein are the property of their respective owner(s). Some of the trademarks appear for identification purposes only.

Warranty: Please refer to Avery Dennison standard terms and conditions: rfid.averydennison.com/termsandconditions

Care and handling: RFID inlays are sensitive to ESD. Observe standard industry practices relating to electronics / RFID to keep environmental impact and static charge to a minimum.

Applications: This product should be tested by the customer / user thoroughly under end use conditions to ensure the product meets the particular requirements. Avery Dennison does not represent that this product is fit for any particular purpose or use. Avery Dennison reserves the right to modify, change, supplement or discontinue product offerings at any time without notice. The information contained herein is believed to be reliable but Avery Dennison makes no representation concerning the accuracy or correctness of the data.

