

# AD Burst M830

## Overview

---

**Frequency Band**

UHF 860 - 960 MHz

---

**Chip**

Impinj M830

---

**IC Attachment Technology**

Direct Chip Attach  
Strap Attach

---

**Antenna Dimensions**

70 x 10.5 mm / 2.756 x 0.413 in

---

**International Standard**

ISO/IEC 18000-63 Type C

---

**Industry Segments**

Retail Apparel  
General Retail  
Industrial Applications

---

**Applications**

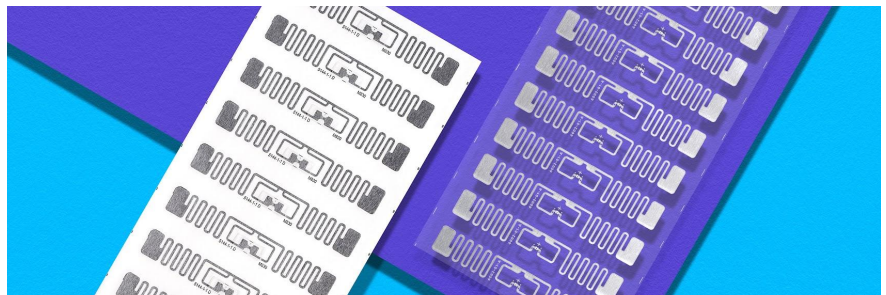
Brand Protection  
Supply Chain Management  
Home Essentials

---

**RoHS**

EU Directive 2011/65/EU and  
2015/863 Compliant

---



## Excellent performance on a wide variety of RFID tagging applications

AD Burst M830 by Avery Dennison Smartrac is the first UHF RFID inlay from the company's expansive portfolio to feature the Impinj M800 series IC. The globally tuned inlay has been designed to achieve outstanding performance in a wide range of apparel, general retail and industrial applications and boasts a slimmed down version of the widely popular and long standing staple, AD Belt. The new design carries a 73 x 13.5mm (2.87 x 0.53in) footprint and is available in multiple delivery formats including dry inlay, wet inlay, and pressure sensitive label.

Although AD Burst M830 is optimized for maximum performance in a traditional retail apparel setting, its strong versatility across a variety of dielectrics makes the globally tuned inlay a viable option for industrial applications. In addition, the design is a strong performer in the general retail market for tagging item and case level merchandise.

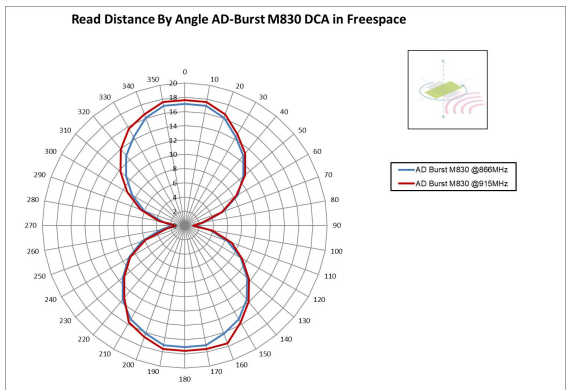
AD Burst M830 inlays feature 128-bit of EPC memory and a 96-bit unique factory locked TID number. A 48-bit unique serial number is factory-encoded into the TID. The improved readability of the new IC offers reliable reading of small tags at high volume and speed which supports the global IoT deployments.

Like all RFID products from Avery Dennison, AD Burst M830 inlays are compliant with ISO 9001:2015 Quality Management and ISO 14001:2015 Environmental Management, which ensure a reliable and state-of-the-art product that meets a variety of application needs, especially in the retail environment. The RFID Lab at Auburn University has awarded Avery Dennison its first comprehensive and significant ARC accreditation for quality.

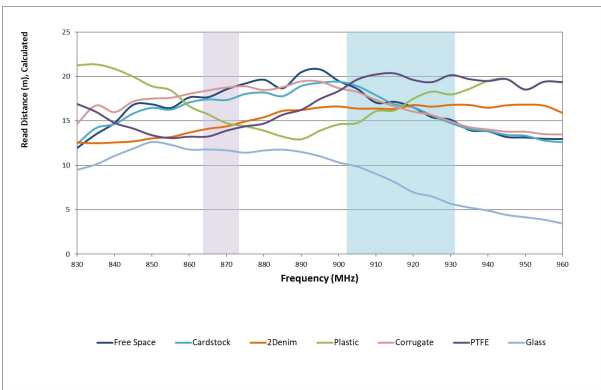
## Technical features - Direct Chip Attach (DCA)

Chip / IC Attachment Technology	Impinj M830 / Direct Chip Attach		
EPC and User Memory	128-bit EPC		
TID Memory	96-bit / 48-bit unique serial number		
Product Code	3009587 / IL-609981	3009588 / IL-609986	3009589 / IL-609988
Delivery Format	Dry inlay	Wet inlay	Label
Die-Cut Dimension	-	73 x 13.5 mm / 2.874 x 0.53 in	73 x 13.5 mm / 2.87 x 0.53 in
Inlay Substrate	PET	PET	PET
Face Sheet	-	-	Mid-gloss paper
Standard Pitch	15.88 mm / 0.625 in	15.88 mm / 0.625 in	15.88 mm / 0.625 in
Web Width	82.55 mm / 3.25 in	82.55 mm / 3.25 in	82.55 mm / 3.25 in
Core Size	76 mm / 3 in	76 mm / 3 in	76 mm / 3 in
Quantity / Reel	20,000 pcs/reel TBD pcs/box	20,000 pcs/reel TBD pcs/box	5,000 pcs/reel TBD pcs/box
Operating Temperature	-40 °C to 85 °C / -40 °F to 185 °F		
On-Metal	Non metal		
Certificate	<a href="#">ARC Specification Guide</a>		

### Orientation Sensitivity



### Read Range



All graphs are indicative: performance in real life applications may vary.

**Contact information**  
[rfid.averydennison.com/contact](mailto:rfid.averydennison.com/contact)  
+1-678-617-2359

Connect with us on:



© 2024 Avery Dennison Corp. All rights reserved. 170 Monarch Lane, Miamisburg, OH 45342, USA Third party trademarks and/or trade names used herein are the property of their respective owner(s). Some of the trademarks appear for identification purposes only.

**Warranty:** Please refer to Avery Dennison standard terms and conditions: [rfid.averydennison.com/termsandconditions](https://www.averydennison.com/termsandconditions)

**Care and handling:** RFID inlays are sensitive to ESD. Observe standard industry practices relating to electronics / RFID to keep environmental impact and static charge to a minimum.

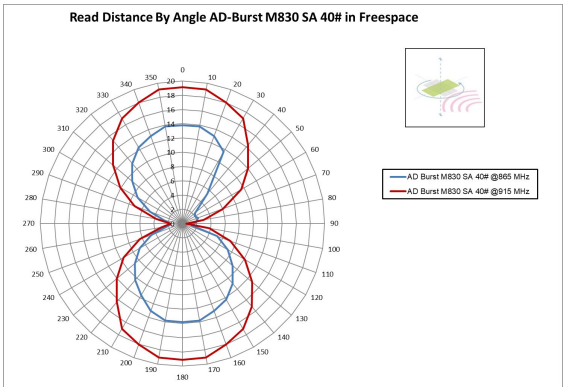
**Applications:** This product should be tested by the customer / user thoroughly under end use conditions to ensure the product meets the particular requirements. Avery Dennison does not represent that this product is fit for any particular purpose or use. Avery Dennison reserves the right to modify, change, supplement or discontinue product offerings at any time without notice. The information contained herein is believed to be reliable but Avery Dennison makes no representation concerning the accuracy or correctness of the data.

## Technical features - Strap Attach (SA)

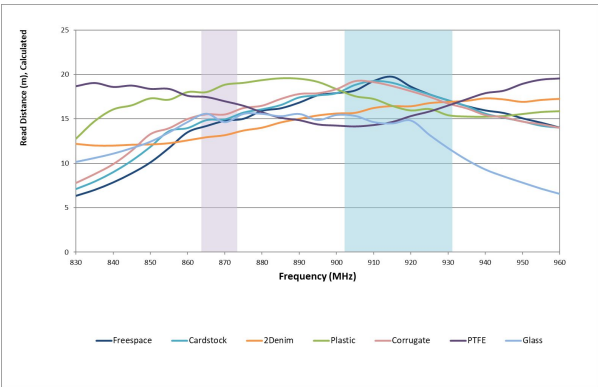
### Chip / IC Attachment Impinj M830 / Strap Attach Technology

EPC and User Memory	128-bit EPC					
TID Memory	96-bit / 48-bit unique serial number					
Product Code	IL-609838	IL-609840	IL-609837	IL-609861	IL-609862	IL-610355
Delivery Format	Dry inlay +	Wet inlay	Dry inlay +	Wet inlay	Label	Label
Die-Cut Dimension	-	73 x 13.5 mm / 2.874 x 0.532 in	-	73 x 13.5 mm / 2.874 x 0.532 in	73 x 13.5 mm / 2.874 x 0.532 in	73 x 13.5 mm / 2.874 x 0.532 in
Inlay Substrate	50um Opaque PET	50um Opaque PET	40# Paper	40# Paper	40# Paper	40# Paper
Face Sheet	-	-	-	-	TT2C	TT2C
Total Thickness	10.6 - 12.6 mils / 269 - 320 microns	11.8 - 13.8 mils / 300 - 350 microns	11.5 - 13.5 mils / 292 - 343 microns	12.7 - 14.7 mils / 322 - 373 microns	16.2 - 18.2 mils / 411 - 462 microns	16.2 - 18.2 mils / 411 - 462 microns
Standard Pitch	15.88 mm / 0.625 in	15.88 mm / 0.625 in	19.05 mm / 0.75 in	19.05 mm / 0.75 in	19.05 mm / 0.75 in	25.4 mm / 1 in
Web Width	82.55 mm / 3.25 in	82.55 mm / 3.25 in	82.55 mm / 3.25 in	82.55 mm / 3.25 in	82.55 mm / 3.25 in	76.2 / 3 in
Core Size	76 mm / 3 in	76 mm / 3 in	76 mm / 3 in	76 mm / 3 in	76 mm / 3 in	76 mm / 3 in
Quantity / Reel	23,032 pcs/reel	14,545 pcs/reel	17,912 pcs/reel	11,377 pcs/reel	3,154 pcs/reel	2,366 pcs/reel
Size of Roll	MAX OD: 15.5"	MAX OD: 13"	MAX OD: 15.5"	MAX OD: 13"	MAX OD: 8"	MAX OD: 8"
Operating Temperature	-40 °C to 85 °C / -40 °F to 185 °F					
On-Metal	Non metal					
Certificate	<a href="#">ARC Specification Guide</a>					

## Orientation Sensitivity



## Read Range



All graphs are indicative: performance in real life applications may vary.

### Contact information

[rfid.averydennison.com/contact](https://rfid.averydennison.com/contact)  
+1-678-617-2359

Connect with us on:



© 2024 Avery Dennison Corp. All rights reserved. 170 Monarch Lane, Miamisburg, OH 45342, USA Third party trademarks and/or trade names used herein are the property of their respective owner(s). Some of the trademarks appear for identification purposes only.

**Warranty:** Please refer to Avery Dennison standard terms and conditions: [rfid.averydennison.com/termsandconditions](https://rfid.averydennison.com/termsandconditions)

**Care and handling:** RFID inlays are sensitive to ESD. Observe standard industry practices relating to electronics / RFID to keep environmental impact and static charge to a minimum.

**Applications:** This product should be tested by the customer / user thoroughly under end use conditions to ensure the product meets the particular requirements. Avery Dennison does not represent that this product is fit for any particular purpose or use. Avery Dennison reserves the right to modify, change, supplement or discontinue product offerings at any time without notice. The information contained herein is believed to be reliable but Avery Dennison makes no representation concerning the accuracy or correctness of the data.

